

# 1-070 Compression Latch Pr20.1

Tool operable, Heavy duty

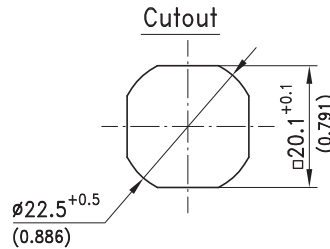
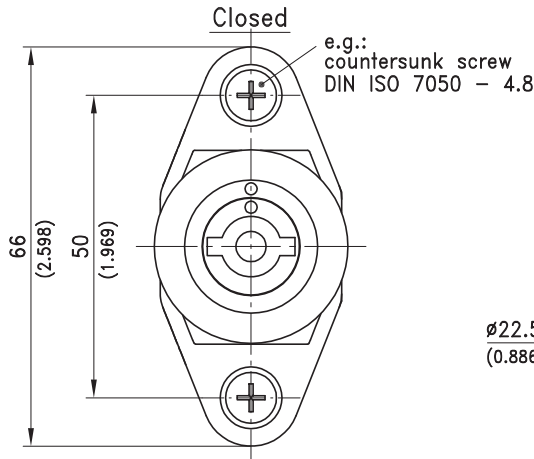
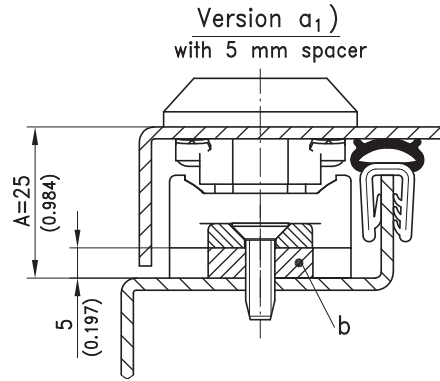
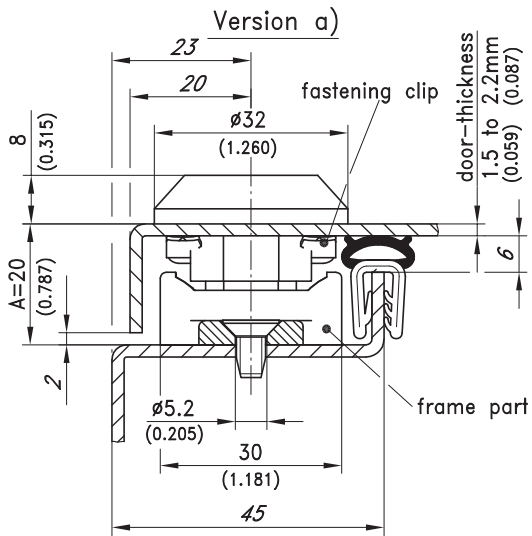


### Product Notes:

- To latch - turn clockwise  
To unlatch - turn counter clockwise
- Two 90° rotations first secure door closed and then apply compression  
After the first 90° opening turn, the pressure can escape because the door is still latched  
The double function is especially beneficial for pressurized enclosures
- Matching dots mark the final position (see lower drawing)
- Outside sealed area applications
- Vibration resistant
- Provides 4.5mm compression
- Add 5mm spacer (b) to increase A-dimension

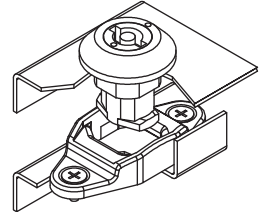
### Material:

- **Housing, insert, cam, frame-part:** Zinc Die, Black
- **Fastening clip:** Spring Steel, Zinc Plated
- **Spacer:** Zinc Die, Black

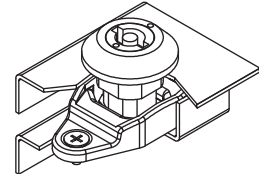


### Function

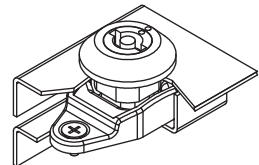
Close the door...



...latch cam and align door...



...compress latched cam by 4.5mm.



a) Compression latch with frame-part and insert	Part No.
Insert - Double bit 3mm pin	291-9005
Insert - Double bit 5mm pin	291-9001
Insert - Square 8mm	291-9002
Insert - Slotted 2x4 deep	291-9003
Insert - Triangular 8mm	291-9004
b) Spacer to increase the A-dimension	
Approximately 5mm	200-4804.34